



31'6" x 40'

2,520 sq. ft.

Two Story

4 Bedrooms

2.5 Baths



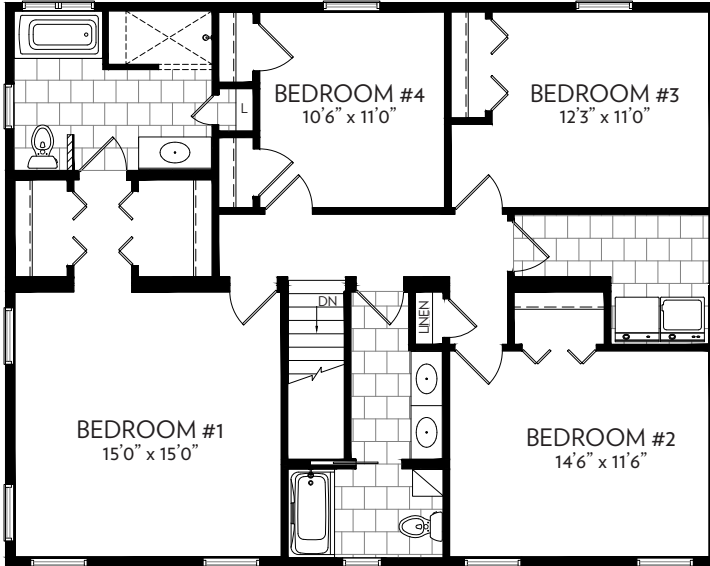
31'6" x 40'

2,520 sq. ft.

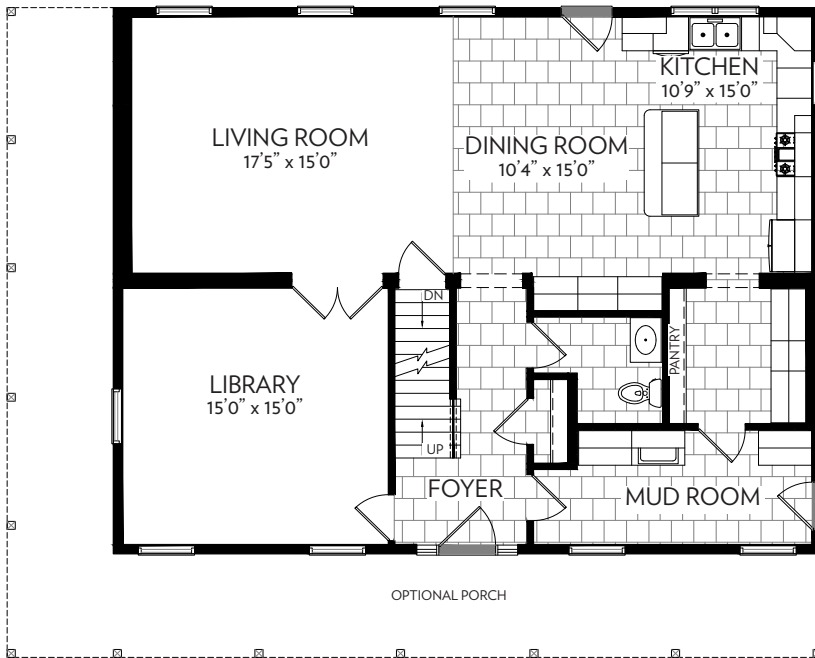
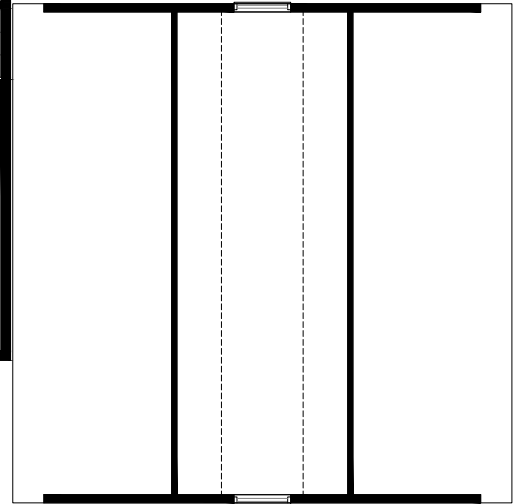
Two Story

4 Bedrooms

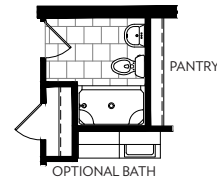
2.5 Baths



Second Floor



First Floor



Please note all floor plans dimensions and room sizes are an approximation and subject to change. The rendering is the artist's impression only and cannot be interpreted as the final specifications of the finished home.

1004 Springbrook Avenue, Moosic, PA 18507
P: 570-774-1000 • F: 570-774-1010
info@sbsmod.com • www.signaturebuildingsystems.com