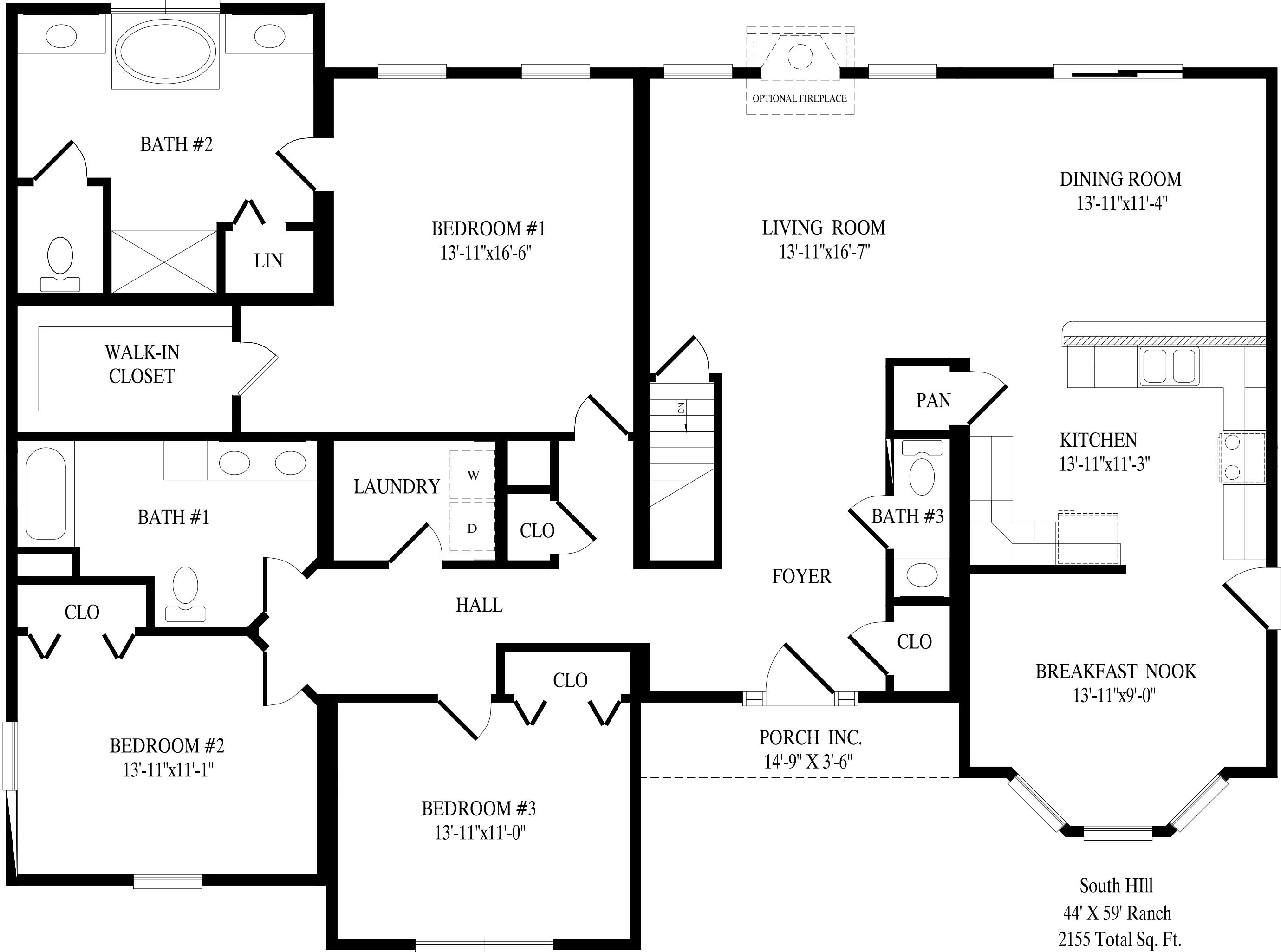




PROFESSIONAL
BUILDING
SYSTEMS, INC.



BATH #2

BEDROOM #1
13'-11"x16'-6"

LIVING ROOM
13'-11"x16'-7"

DINING ROOM
13'-11"x11'-4"

WALK-IN
CLOSET

LIN

DN

PAN

KITCHEN
13'-11"x11'-3"

BATH #1

LAUNDRY

W

D

CLO

BATH #3

FOYER

CLO

HALL

CLO

BREAKFAST NOOK
13'-11"x9'-0"

BEDROOM #2
13'-11"x11'-1"

CLO

PORCH INC.
14'-9" X 3'-6"

BEDROOM #3
13'-11"x11'-0"

South Hill
44' X 59' Ranch
2155 Total Sq. Ft.